

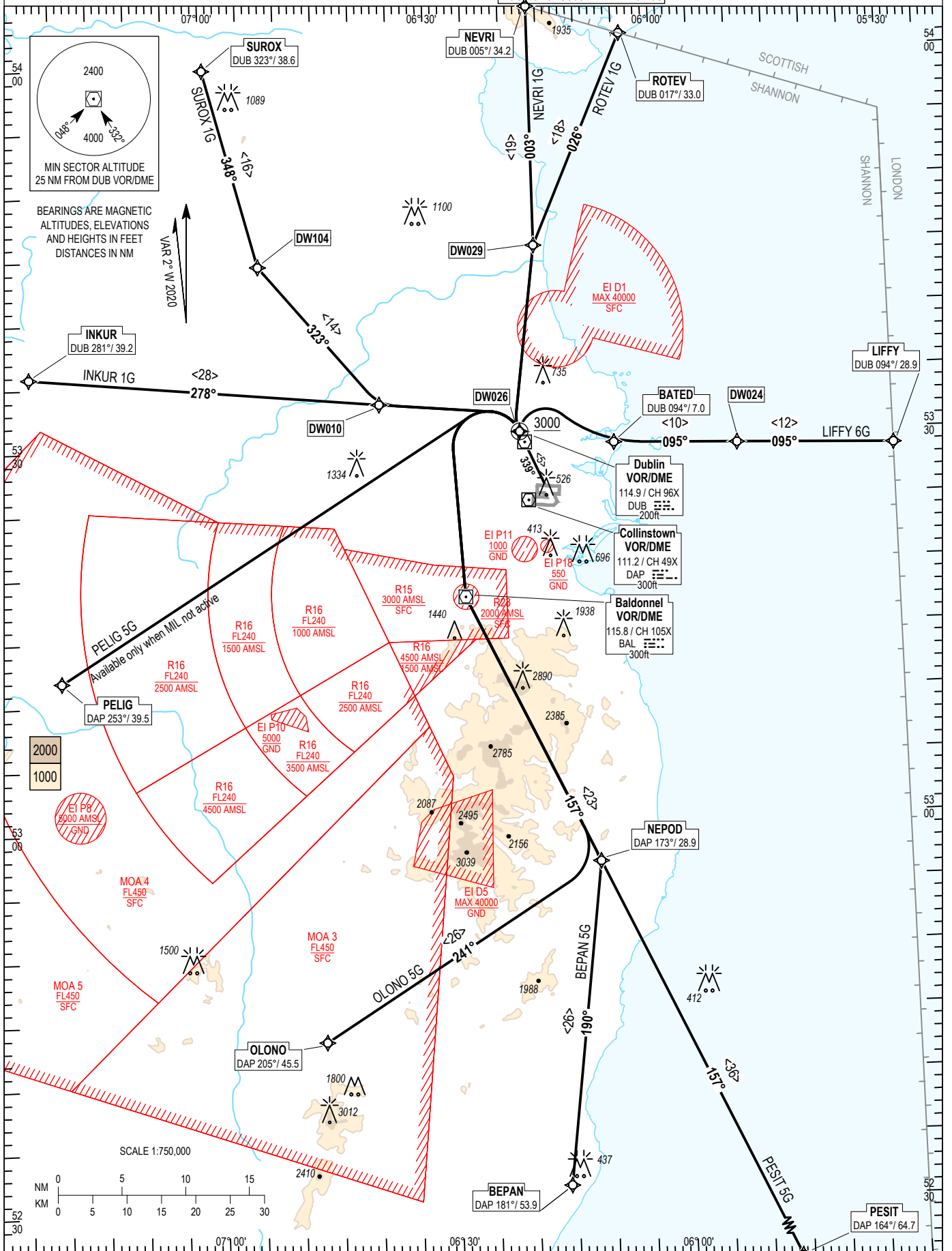
RNAV STANDARD DEPARTURE CHART
INSTRUMENT (SID) - ICAO

TRANS ALT 5000ft
TRANS LEVEL by ATC

ATIS	124.530
TWR	118.600
ACC Lower North	132.580
ACC Lower South	120.755

DUBLIN RWY 34, CAT C, D
LIFFY 6G, PESIT 5G, BEPAN 5G, OLONO 5G, PELIG 5G,
INKUR 1G, SUROX 1G, NEVRI 1G, ROTEV 1G.

CHANGE: MAG VAR, Tracks, Chart Numbering, Frequencies, LIFFY Route Validity Indicator, Notes, Renumbered & New Alfa-Numeric Points and removal of MEF figures & grid lines.



NOTES: 1. Climb gradient 9.1 % (550 ft/NM) (3.3% for obstacle clearance). 2. Close-in obstacles exist. 3. MAX IAS 250kts below FL100. 4. For LIFFY MAX IAS: 290kts above FL100. 5. Integrity check fix available from RADAR. 6. On passing 2000ft contact Dublin Departure North or South as appropriate. 7. LIFFY SID traffic with a RFL of FL180 or above must be FL180 by BAVUD, GINIS or ABGEP respectively. 8. DME/DME or GNSS navigation required. 9. Climb to FL90. Do not climb above FL90 until instructed by ATC.

BEPAN5G CAT C/D SID RWY34
BEPA5G

Nav. Spec.	WPT Name	Latitude (N)/ Longitude (W)	Path Term	Fly-By Fly-over	True track / Mag track	Distance (NM)	Upper limit / Lower limit	Speed Limit (kts)	Remarks
RNAV1	DW026	533048.0 / 0061902.8	CF	Fly-Over	336.6 / 339	-	- / A3000	-	339° DUB / D0.9 DUB
RNAV1	BAL	531759.6 / 0062652.0	DF	Fly-By	-	-	-	-	Turn L , VOR
RNAV1	NEPOD	525657.2 / 0061029.8	TF	Fly-By	154.8 / 157	23.3	-	-	-
RNAV1	BEPAN	523136.2 / 0061549.5	TF	Fly-By	187.3 / 190	25.6	-	-	Turn R

INKUR1G CAT C/D SID RWY34
INKU1G

Nav. Spec.	WPT Name	Latitude (N)/ Longitude (W)	Path Term	Fly-By Fly-over	True track / Mag track	Distance (NM)	Upper limit / Lower limit	Speed Limit (kts)	Remarks
RNAV1	DW026	533048.0 / 0061902.8	CF	Fly-Over	336.6 / 339	-	- / A3000	-	339° DUB / D0.9 DUB
RNAV1	DW010	533315.0 / 0063725.0	DF	Fly-By	-	-	-	-	Turn L
RNAV1	INKUR	533551.3 / 0072328.6	TF	Fly-By	275.7 / 278	27.6	-	-	-

LIFFY6G CAT C/D SID RWY34
LIFF6G

Nav. Spec.	WPT Name	Latitude (N)/ Longitude (W)	Path Term	Fly-By Fly-over	True track / Mag track	Distance (NM)	Upper limit / Lower limit	Speed Limit (kts)	Remarks
RNAV1	DW026	533048.0 / 0061902.8	CF	Fly-Over	336.6 / 339	-	- / A3000	-	339° DUB / D0.9 DUB
RNAV1	BATED	532942.8 / 0060642.8	DF	Fly-By	-	-	-	-	Turn R
RNAV1	DW024	532920.2 / 0055032.5	TF	Fly-By	092.1 / 095	9.7	-	-	-
RNAV1	LIFFY	532848.3 / 0053000.0	TF	Fly-By	092.3 / 095	12.3	-	-	-

NEVRI1G CAT C/D SID RWY34
NEVR1G

Nav. Spec.	WPT Name	Latitude (N)/ Longitude (W)	Path Term	Fly-By Fly-over	True track / Mag track	Distance (NM)	Upper limit / Lower limit	Speed Limit (kts)	Remarks
RNAV1	DW026	533048.0 / 0061902.8	CF	Fly-Over	336.6 / 339	-	- / A3000	-	339° DUB / D0.9 DUB
RNAV1	DW029	534521.0 / 0061621.0	DF	Fly-By	-	-	-	-	Turn R
RNAV1	NEVRI	540406.0 / 0061611.4	TF	Fly-By	000.3 / 003	18.8	-	-	-

OLON05G CAT C/D SID RWY34
OLON5G

Nav. Spec.	WPT Name	Latitude (N)/ Longitude (W)	Path Term	Fly-By Fly-over	True track / Mag track	Distance (NM)	Upper limit / Lower limit	Speed Limit (kts)	Remarks
RNAV1	DW026	533048.0 / 0061902.8	CF	Fly-Over	336.6 / 339	-	- / A3000	-	339° DUB / D0.9 DUB
RNAV1	BAL	531759.6 / 0062652.0	DF	Fly-By	-	-	-	-	Turn L , VOR
RNAV1	NEPOD	525657.2 / 0061029.8	TF	Fly-By	154.8 / 157	23.3	-	-	-
RNAV1	OLONO	524323.1 / 0064644.4	TF	Fly-By	238.5 / 241	25.8	-	-	Turn R

PELIG5G CAT C/D SID RWY34
PELI5G

Nav. Spec.	WPT Name	Latitude (N)/ Longitude (W)	Path Term	Fly-By Fly-over	True track / Mag track	Distance (NM)	Upper limit / Lower limit	Speed Limit (kts)	Remarks
RNAV1	DW026	533048.0 / 0061902.8	CF	Fly-Over	336.6 / 339	-	- / A3000	-	339° DUB / D0.9 DUB
RNAV1	PELIG	531158.5 / 0072000.0	DF	Fly-By	-	-	-	-	Turn L

PESIT5G CAT C/D SID RWY34
PESI5G

Nav. Spec.	WPT Name	Latitude (N)/ Longitude (W)	Path Term	Fly-By Fly-over	True track / Mag track	Distance (NM)	Upper limit / Lower limit	Speed Limit (kts)	Remarks
RNAV1	DW026	533048.0 / 0061902.8	CF	Fly-Over	336.6 / 339	-	- / A3000	-	339° DUB / D0.9 DUB
RNAV1	BAL	531759.6 / 0062652.0	DF	Fly-By	-	-	-	-	Turn L , VOR
RNAV1	NEPOD	525657.2 / 0061029.8	TF	Fly-By	154.8 / 157	23.3	-	-	-
RNAV1	PESIT	522356.6 / 0054524.0	TF	Fly-By	155.0 / 157	36.4	-	-	-

ROTEV1G CAT C/D SID RWY34

ROTE1G

Nav. Spec.	WPT Name	Latitude (N)/ Longitude (W)	Path Term	Fly-By Fly-over	True track / Mag track	Distance (NM)	Upper limit / Lower limit	Speed Limit (kts)	Remarks
RNAV1	DW026	533048.0 / 0061902.8	CF	Fly-Over	336.6 / 339	-	- / A3000	-	339° DUB / D0.9 DUB
RNAV1	DW029	534521.0 / 0061621.0	DF	Fly-By	-	-	-	-	Turn R
RNAV1	ROTEV	540143.7 / 0060358.4	TF	Fly-By	024.0 / 026	18.0	-	-	-

SUROX1G CAT C/D SID RWY34

SURO1G

Nav. Spec.	WPT Name	Latitude (N)/ Longitude (W)	Path Term	Fly-By Fly-over	True track / Mag track	Distance (NM)	Upper limit / Lower limit	Speed Limit (kts)	Remarks
RNAV1	DW026	533048.0 / 0061902.8	CF	Fly-Over	336.6 / 339	-	- / A3000	-	339° DUB / D0.9 DUB
RNAV1	DW010	533315.0 / 0063725.0	DF	Fly-By	-	-	-	-	Turn L
RNAV1	DW104	534417.9 / 0065252.9	TF	Fly-By	320.4 / 323	14.4	-	-	-
RNAV1	SUROX	535948.0 / 0065936.5	TF	Fly-By	345.7 / 348	16.0	-	-	Turn R