

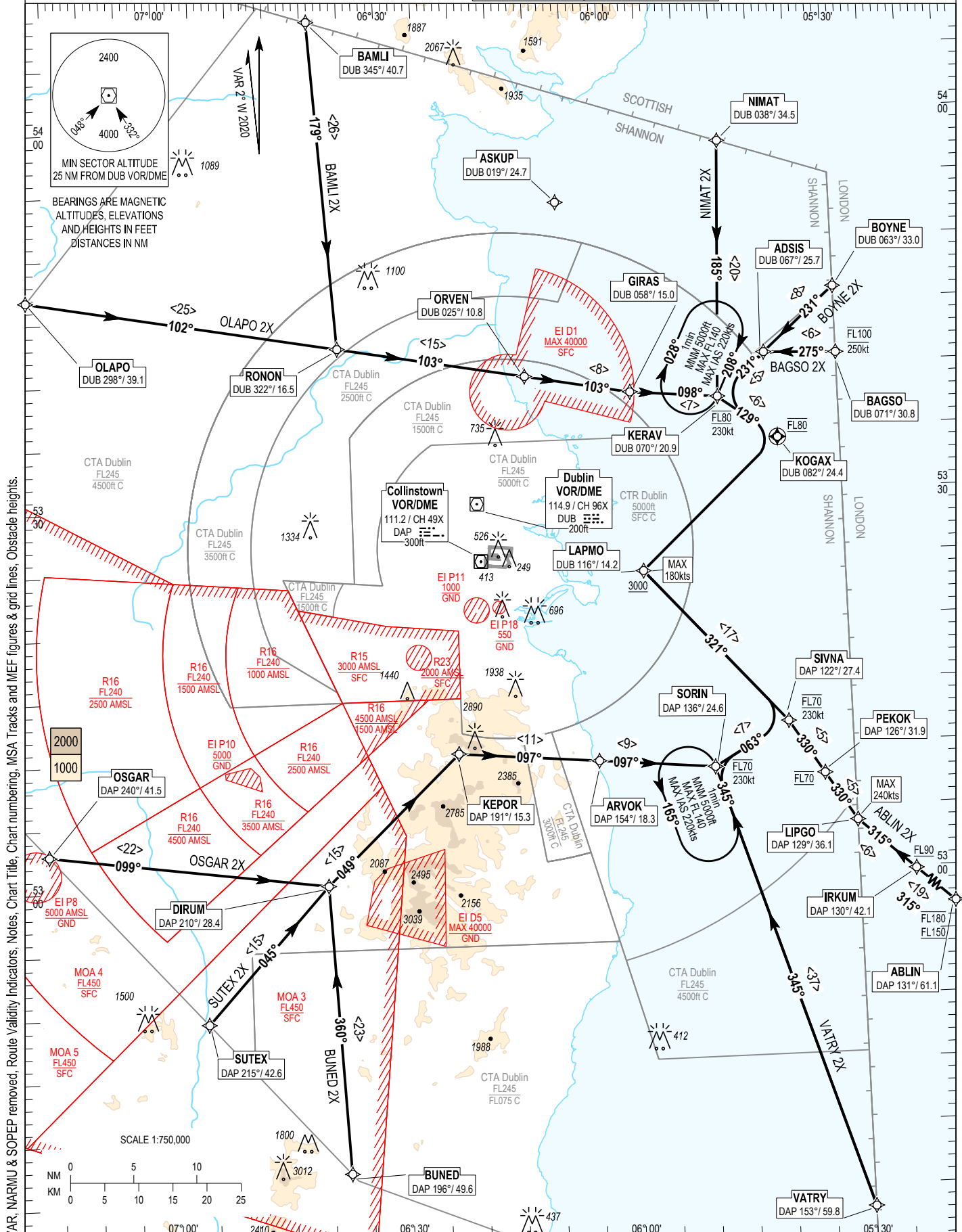
RNAV STANDARD ARRIVAL CHART  
INSTRUMENT (STAR) - ICAO

TRANS ALT 5000ft  
TRANS LEVEL by ATC

ATIS	124.530	ACC Upper North	129.180
APP	121.100	ACC Upper South	135.655
		ACC Lower North	132.580
		ACC Lower South	120.755

DUBLIN RWY 28L

NIMAT 2X, BOYNE 2X, BAGSO 2X, ABLIN 2X, VATRY 2X,  
BUNED 2X, SUTEX 2X, OSGAR 2X, OLAPO 2X, BAMLI 2X.



CHANGE: MAG VAR, NARMU & SOEP removed, Route Validity Indicators, Notes, Chart Title, Chart numbering, MSA Tracks and MEF figures & grid lines, Obstacle heights.

**NOTES:** 1. ASKUP may be used tactically by ATC to ensure aircraft routings are clear of EI D1. 2. MAX IAS 250kts below FL100. 3. Aircraft on ABLIN STAR will be directed to SORIN if holding required. 4. DME/DME or GNSS navigation required. 5. Aircraft routing via ASKUP that experience radio communication failure should follow the appropriate procedure for the runway 28L remaining clear of EI D1. 6. ABLIN 2X STAR: In the event of radio communication failure aircraft flying the ABLIN 2X STAR should squawk A7600, continue on the procedure maintaining required altitude and speed constraints, fly the sequence leg and complete the approach. **VERTICAL PLANNING INFORMATION:** 1. ACTUAL DESCENT CLEARANCE WILL BE AS DIRECTED BY ATC. **CAUTION:** 2. Pilots must inform ATC if unable to comply with any level or speed constraint.

ABLIN2X STAR RWY 28L

ABLI2X

Nav. Spec.	WPT Name	Latitude (N)/ Longitude (W)	Path Term	Fly-By Fly-over	True track / Mag track	Distance (NM)	Upper limit / Lower limit	Speed Limit (kts)	Remarks
RNAV1	ABLIN	524658.0 / 0045933.0	IF	-	-	-	FL180 / FL150	-	-
RNAV1	IRKUM	525948.0 / 0052239.0	TF	Fly-by	312.7 / 315	19.0	- / FL090	-	-
RNAV1	LIPGO	530350.1 / 0053000.0	TF	Fly-by	312.4 / 315	6.0	-	240	-
RNAV1	PEKOK	530739.3 / 0053400.8	TF	Fly-by	327.7 / 330	4.5	FL070 / FL070	-	Turn R
RNAV1	SIVNA	531152.3 / 0053827.7	TF	Fly-by	327.7 / 330	5.0	FL070 / FL070	230	-
RNAV1	LAPMO	532411.0 / 0055644.1	CF	Fly-by	318.5 / 321	-	- / A3000+	180	Turn L

BAGSO2X STAR RWY 28L

BAGS2X

Nav. Spec.	WPT Name	Latitude (N)/ Longitude (W)	Path Term	Fly-By Fly-over	True track / Mag track	Distance (NM)	Upper limit / Lower limit	Speed Limit (kts)	Remarks
RNAV1	BAGSO	534048.0 / 0053000.0	IF	-	-	-	FL100 / -	250	-
RNAV1	ADSI	534103.1 / 0053934.0	TF	Fly-by	272.6 / 275	5.7	-	-	-
RNAV1	KERAV	533742.7 / 0054557.3	TF	Fly-by	228.7 / 231	5.1	FL080 / FL080	230	Turn L
RNAV1	KOGAX	533418.6 / 0053814.1	CF	Fly-over	126.5 / 129	-	FL080 / FL080	-	Turn L , 082° DUB / D24.4 DUB
RNAV1	LAPMO	532411.0 / 0055644.1	DF	Fly-by	-	-	- / A3000+	180	Turn R

BAMLI2X STAR RWY 28L

BAMLI2X

Nav. Spec.	WPT Name	Latitude (N)/ Longitude (W)	Path Term	Fly-By Fly-over	True track / Mag track	Distance (NM)	Upper limit / Lower limit	Speed Limit (kts)	Remarks
RNAV1	BAMLI	540828.5 / 0063904.0	IF	-	-	-	-	-	-
RNAV1	RONON	534233.9 / 0063619.2	TF	Fly-by	176.4 / 179	26.0	-	-	-
RNAV1	ORVEN	533953.5 / 0061129.8	TF	Fly-by	100.1 / 103	15.0	-	-	Turn L
RNAV1	GIRAS	533821.0 / 0055733.2	TF	Fly-by	100.4 / 103	8.4	-	-	-
RNAV1	KERAV	533742.7 / 0054557.3	TF	Fly-by	095.2 / 098	6.9	FL080 / FL080	230	Turn L
RNAV1	KOGAX	533418.6 / 0053814.1	CF	Fly-over	126.5 / 129	-	FL080 / FL080	-	Turn R , 082° DUB / D24.4 DUB
RNAV1	LAPMO	532411.0 / 0055644.1	DF	Fly-by	-	-	- / A3000+	180	Turn R

BOYNE2X STAR RWY 28L

BOYN2X

Nav. Spec.	WPT Name	Latitude (N)/ Longitude (W)	Path Term	Fly-By Fly-over	True track / Mag track	Distance (NM)	Upper limit / Lower limit	Speed Limit (kts)	Remarks
RNAV1	BOYNE	534601.6 / 0053000.0	IF	-	-	-	-	-	-
RNAV1	ADSI	534103.1 / 0053934.0	TF	Fly-by	228.8 / 231	7.6	-	-	-
RNAV1	KERAV	533742.7 / 0054557.3	TF	Fly-by	228.7 / 231	5.1	FL080 / FL080	230	-
RNAV1	KOGAX	533418.6 / 0053814.1	CF	Fly-over	126.5 / 129	-	FL080 / FL080	-	Turn L , 082° DUB / D24.4 DUB
RNAV1	LAPMO	532411.0 / 0055644.1	DF	Fly-by	-	-	- / A3000+	180	Turn R

BUNED2X STAR RWY 28L

BUNE2X

Nav. Spec.	WPT Name	Latitude (N)/ Longitude (W)	Path Term	Fly-By Fly-over	True track / Mag track	Distance (NM)	Upper limit / Lower limit	Speed Limit (kts)	Remarks
RNAV1	BUNED	523721.9 / 0063748.2	IF	-	-	-	-	-	-
RNAV1	DIRUM	530009.7 / 0063940.0	TF	Fly-by	357.2 / 360	22.9	-	-	-
RNAV1	KEPOR	531016.5 / 0062200.7	TF	Fly-by	046.3 / 049	14.7	-	-	Turn R
RNAV1	ARVOK	530919.0 / 0060335.1	TF	Fly-by	094.8 / 097	11.1	-	-	Turn R
RNAV1	SORIN	530829.3 / 0054822.5	TF	Fly-by	095.1 / 097	9.2	FL070 / FL070	230	-
RNAV1	SIVNA	531152.3 / 0053827.7	TF	Fly-by	060.3 / 063	6.9	FL070 / FL070	230	Turn L
RNAV1	LAPMO	532411.0 / 0055644.1	CF	Fly-by	318.5 / 321	-	- / A3000+	180	Turn L

NIMAT2X STAR RWY 28L

NIMA2X

Nav. Spec.	WPT Name	Latitude (N)/ Longitude (W)	Path Term	Fly-By Fly-over	True track / Mag track	Distance (NM)	Upper limit / Lower limit	Speed Limit (kts)	Remarks
RNAV1	NIMAT	535754.1 / 0054431.7	IF	-	-	-	-	-	-
RNAV1	KERAV	533742.7 / 0054557.3	TF	Fly-by	182.4 / 185	20.2	FL080 / FL080	230	-
RNAV1	KOGAX	533418.6 / 0053814.1	CF	Fly-over	126.5 / 129	-	FL080 / FL080	-	Turn L , 082° DUB / D24.4 DUB
RNAV1	LAPMO	532411.0 / 0055644.1	DF	Fly-by	-	-	- / A3000+	180	Turn R

OLAPO2X STAR RWY 28L

OLAP2X

Nav. Spec.	WPT Name	Latitude (N)/ Longitude (W)	Path Term	Fly-By Fly-over	True track / Mag track	Distance (NM)	Upper limit / Lower limit	Speed Limit (kts)	Remarks
RNAV1	OLAPO	534649.0 / 0071740.6	IF	-	-	-	-	-	-
RNAV1	RONON	534233.9 / 0063619.2	TF	Fly-by	099.6 / 102	24.9	-	-	-
RNAV1	ORVEN	533953.5 / 0061129.8	TF	Fly-by	100.1 / 103	15.0	-	-	-
RNAV1	GIRAS	533821.0 / 0055733.2	TF	Fly-by	100.4 / 103	8.4	-	-	-
RNAV1	KERAV	533742.7 / 0054557.3	TF	Fly-by	095.2 / 098	6.9	FL080 / FL080	230	Turn L
RNAV1	KOGAX	533418.6 / 0053814.1	CF	Fly-over	126.5 / 129	-	FL080 / FL080	-	Turn R , 082° DUB / D24.4 DUB
RNAV1	LAPMO	532411.0 / 0055644.1	DF	Fly-by	-	-	- / A3000+	180	Turn R

OSGAR2X STAR RWY 28L  
OSGA2X

Nav. Spec.	WPT Name	Latitude (N)/ Longitude (W)	Path Term	Fly-By Fly-over	True track / Mag track	Distance (NM)	Upper limit / Lower limit	Speed Limit (kts)	Remarks
RNAV1	OSGAR	530257.9 / 0071612.8	IF	-	-	-	-	-	-
RNAV1	DIRUM	530009.7 / 0063940.0	TF	Fly-by	097.0 / 099	22.2	-	-	-
RNAV1	KEPOR	531016.5 / 0062200.7	TF	Fly-by	046.3 / 049	14.7	-	-	Turn L
RNAV1	ARVOK	530919.0 / 0060335.1	TF	Fly-by	094.8 / 097	11.1	-	-	Turn R
RNAV1	SORIN	530829.3 / 0054822.5	TF	Fly-by	095.1 / 097	9.2	FL070 / FL070	230	-
RNAV1	SIVNA	531152.3 / 0053827.7	TF	Fly-by	060.3 / 063	6.9	FL070 / FL070	230	Turn L
RNAV1	LAPMO	532411.0 / 0055644.1	CF	Fly-by	318.5 / 321	-	- / A3000+	180	Turn L

SUTEX2X STAR RWY 28L  
SUTE2X

Nav. Spec.	WPT Name	Latitude (N)/ Longitude (W)	Path Term	Fly-By Fly-over	True track / Mag track	Distance (NM)	Upper limit / Lower limit	Speed Limit (kts)	Remarks
RNAV1	SUTEX	524927.7 / 0065549.3	IF	-	-	-	-	-	-
RNAV1	DIRUM	530009.7 / 0063940.0	TF	Fly-by	042.3 / 045	14.5	-	-	-
RNAV1	KEPOR	531016.5 / 0062200.7	TF	Fly-by	046.3 / 049	14.7	-	-	Turn R
RNAV1	ARVOK	530919.0 / 0060335.1	TF	Fly-by	094.8 / 097	11.1	-	-	Turn R
RNAV1	SORIN	530829.3 / 0054822.5	TF	Fly-by	095.1 / 097	9.2	FL070 / FL070	230	-
RNAV1	SIVNA	531152.3 / 0053827.7	TF	Fly-by	060.3 / 063	6.9	FL070 / FL070	230	Turn L
RNAV1	LAPMO	532411.0 / 0055644.1	CF	Fly-by	318.5 / 321	-	- / A3000+	180	Turn L

VATRY2X STAR RWY 28L  
VATR2X

Nav. Spec.	WPT Name	Latitude (N)/ Longitude (W)	Path Term	Fly-By Fly-over	True track / Mag track	Distance (NM)	Upper limit / Lower limit	Speed Limit (kts)	Remarks
RNAV1	VATRY	523316.0 / 0053000.0	IF	-	-	-	-	-	-
RNAV1	SORIN	530829.3 / 0054822.5	TF	Fly-by	342.6 / 345	37.0	FL070 / FL070	230	-
RNAV1	SIVNA	531152.3 / 0053827.7	TF	Fly-by	060.3 / 063	6.9	FL070 / FL070	230	Turn R
RNAV1	LAPMO	532411.0 / 0055644.1	CF	Fly-by	318.5 / 321	-	- / A3000+	180	Turn L

**Hold Identification – EIDW AD 2.24-22.4**

Holding Fix	Latitude (N) / Longitude (W)	Inbound True Track (degrees)	Inbound Mag Track (degrees)	Maximum Indicated Airspeed (kts)	Minimum Holding Altitude (ft)	Maximum Holding Level (FL)	Outbound time (min)	Direction of Turn
KERAV	533742.7 / 0054557.3	205.6	208	230	A5000	FL140	1	R
SORIN	530829.3 / 0054822.5	342.4	345	230	A5000	FL140	1	L