

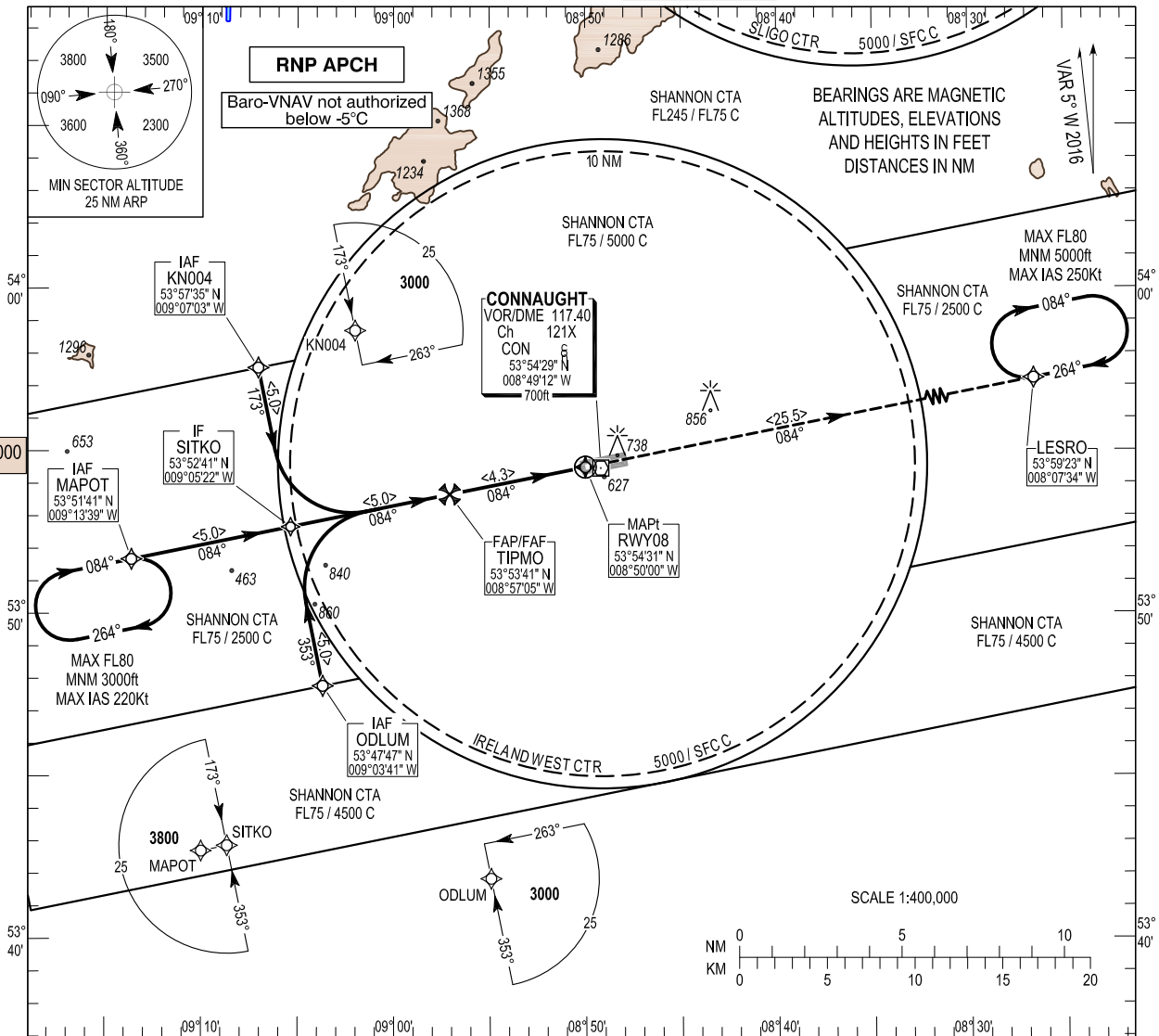
**INSTRUMENT APPROACH CHART - ICAO**

SBAS  
CH 57182  
E08A

**AERODROME ELEV 665 ft**  
HEIGHTS RELATED TO  
THR RWY 08 - ELEV 592 ft

TWR 130.7  
GND 130.7, 121.9  
ATIS 118.525  
Emerg 121.5

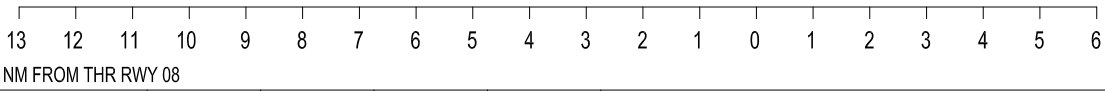
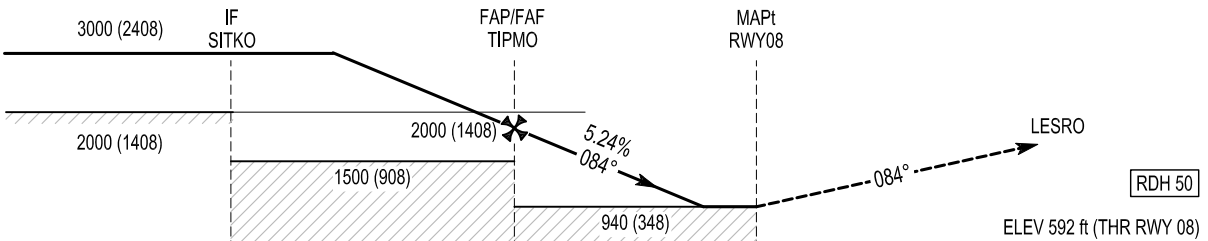
**IRELAND WEST/KNOCK**  
RNP RWY 08  
CONSULT NOTAM FOR LATEST INFORMATION  
(ACFT CAT A, B, C, D)  
MNM TEMP -5°C  
MAX TEMP +30°C



CHANGE: GENERAL REVISION, ATIS FREQUENCY, CHART TITLE, LPV AND FAS DATA BLOCK.

**TRANSITION ALTITUDE 5000 ft**

**MISSED APPROACH:**  
Climb straight ahead to 5000ft to enter the LESRO hold or as instructed by ATC.



Aircraft Category		A	B	C	D	Recommended Profile on Final Approach										
OCA (OCH)	LPV	860 (268)	870 (278)	880 (288)	890 (298)	THR 08	4.0	3.0	2.0	1.0						
	LNAV/VNAV	860 (268)	870 (278)	880 (288)	890 (298)	ALT (HGT)	1915 (1323)	1595 (1003)	1280 (688)	960 (368)						
	LNAV	940 (348)														
VISUAL MANOEUVRING (These heights are AAL)		1060 (395)	1160 (495)	1260 (595)	1360 (695)	Descent Rate 5.24%, (3°), 318 ft/NM										
								kts	80	100	120	140	160			
								ft / min	430	530	640	740	850			

**IRELAND WEST/KNOCK RNP RWY 08**

Navigation Performance	Path Terminator	WPT Name	Latitude (N)/ Longitude (W)	Fly-By or Fly-over	Distance (NM)	True Track/ Magnetic Track	Upper limit/ Lower Limit	Speed Limit (kts)	VPA / TCH	Remarks
RNP APCH	IF	ODLUM	534747.5/ 0090341.2	Fly-By	-	-	-	-	-	-
RNP APCH	TF	SITKO	535241.1/ 0090522.0	Fly-By	5.0	348.5/ 354	+3000	-	-	-
RNP APCH	TF	TIPMO	535340.5/ 0085704.9	Fly-By	5.0	078.5/ 084	2000	-	-	R
RNP APCH	CF	RWY08	535430.7/ 0085000.5	Fly-Over	4.3	078.6/ 084	-	-	3.00 / 50	-
RNP APCH	CF	LESRO	535922.7/ 0080734.0	Fly-By	25.5	078.7/ 084	-	-	-	-

Navigation Performance	Path Terminator	WPT Name	Latitude (N)/ Longitude (W)	Fly-By or Fly-over	Distance (NM)	True Track/ Magnetic Track	Upper limit/ Lower Limit	Speed Limit (kts)	VPA / TCH	Remarks
RNP APCH	IF	MAPOT	535141.1/ 0091338.9	Fly-By	-	-	-	-	-	-
RNP APCH	TF	SITKO	535241.1/ 0090522.0	Fly-By	5.0	078.4/ 084	+3000	-	-	-
RNP APCH	TF	TIPMO	535340.5/ 0085704.9	Fly-By	5.0	078.5/ 084	2000	-	-	-
RNP APCH	CF	RWY08	535430.7/ 0085000.5	Fly-Over	4.3	078.6/ 084	-	-	3.00 / 50	-
RNP APCH	CF	LESRO	535922.7/ 0080734.0	Fly-By	25.5	078.7/ 084	-	-	-	-

Navigation Performance	Path Terminator	WPT Name	Latitude (N)/ Longitude (W)	Fly-By or Fly-over	Distance (NM)	True Track/ Magnetic Track	Upper limit/ Lower Limit	Speed Limit (kts)	VPA / TCH	Remarks
RNP APCH	IF	KN004	535734.7/ 0090703.2	Fly-By	-	-	-	-	-	-
RNP APCH	TF	SITKO	535241.1/ 0090522.0	Fly-By	5.0	168.5/ 173	+3000	-	-	-
RNP APCH	TF	TIPMO	535340.5/ 0085704.9	Fly-By	5.0	078.5/ 084	2000	-	-	L
RNP APCH	CF	RWY08	535430.7/ 0085000.5	Fly-Over	4.3	078.6/ 084	-	-	3.00 / 50	-
RNP APCH	CF	LESRO	535922.7/ 0080734.0	Fly-By	25.5	078.7/ 084	-	-	-	-

**Hold Identification – EIKN AD 2.24-14**

Holding Fix	Latitude (N) / Longitude (W)	Inbound True Track (degrees)	Inbound Mag Track (degrees)	Maximum Indicated Airspeed (kts)	Minimum/Maximum Holding Altitude/ Level (FL/ft)	Distance outbound Limit (NM)	Direction of Turn
LESRO	535922.7/ 0080734.0	259.4	264	250	5000ft/FL80	5.0	R
MAPOT	535141.1/ 0091338.9	078.3	084	220	3000ft/FL80	4.1	R

**SBAS FAS Data Block Coding Data  
Ireland West RNP RWY 08**

Input Data	
Operation Type	0
SBAS Provider	1
Airport Identifier	EIKN
Runway	08
Runway Direction	0
Approach Performance Designator	0
Route Indicator	
Reference Path Data Selector	0
Reference Path Identifier	E08A
LTP / FTP Latitude	535430.7205N
LTP / FTP Longitude	0085000.4565W
LTP / FTP Ellipsoidal Height (metres)	238.3
FPAP Latitude	535444.3300N
Delta FPAP Latitude (seconds)	13.6095
FPAP Longitude	0084804.7800W
Delta FPAP Longitude (seconds)	115.6765
Threshold Crossing Height	50
TCH Units Selector (feet)	0
Glidepath Angle (degrees)	3.00
Course Width (metres)	105.00
Length Offset (metres)	0
HAL (metres)	40.0
VAL (metres)	50.0
Output Data	
Data Block	10 0E 0B 09 05 08 00 00 01 38 30 05 81 91 22 17 EF 86 35 FC 4F 1D 53 6A 00 B9 87 03 F4 01 2C 01 64 00 C8 FA F9 ED B2 25
Calculated CRC Value	F9EDB225
Required Additional Data (not CRC wrapped)	
ICAO Code	EI
LTP/FTP Orthometric Height (metres)	180.4
FPAP Orthometric Height (metres)	202.7
SBAS EGNOS Channel	57182