

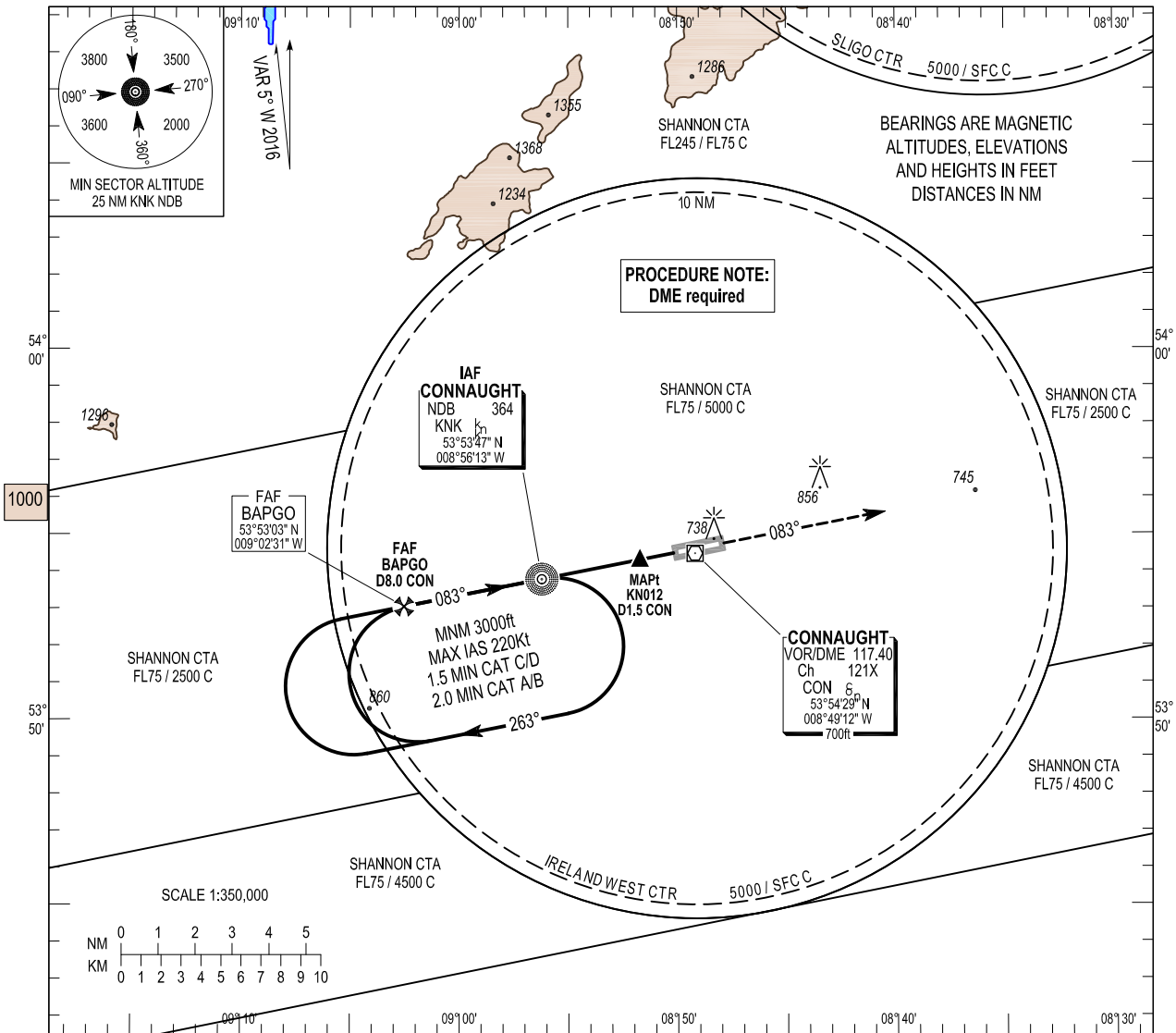
INSTRUMENT APPROACH CHART - ICAO

AERODROME ELEV 665 ft
 HEIGHTS RELATED TO THR RWY 08 - ELEV 592 ft

TWR 130.7
 GND 130.7, 121.9
 Emerg 121.5

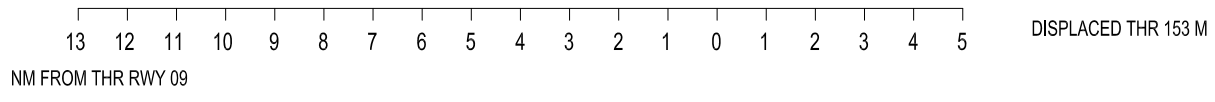
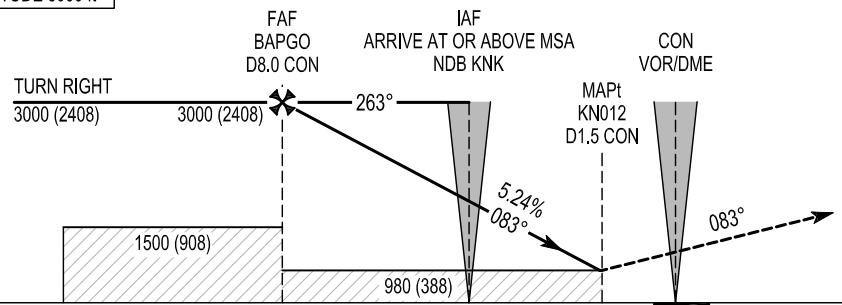
CONSULT NOTAM FOR LATEST INFORMATION

IRELAND WEST/KNOCK NDB RWY 08
 (ACFT CAT A, B, C, D)



TRANSITION ALTITUDE 5000 ft

MISSED APPROACH:
 At the MAPt, climb on track 083° to 3000ft, turning right continuing climb to 4000ft to enter the KNK hold or as instructed by ATC.



Change: General Revision.

Chart created by ASAP s.r.o.

OCA (H)	A	B	C	D	Ideal Altitude (Height) on Final Approach								
					D7.0 CON	D6.0 CON	D5.0 CON	D4.0 CON	D3.0 CON				
STRAIGHT-IN APPROACH	980 (388)				2725 (2133)	2406 (1814)	2087 (1495)	1769 (1177)	1450 (858)				
VISUAL MANOEUVRING (These heights are AAL)	1060 (395)	1160 (495)	1260 (595)	1360 (695)	Ground speed		Kts	70	90	100	120	140	160
					Descent Rate 5.24% (3°), 318 ft/NM		ft / min	370	480	530	640	740	850

RWY 08 NDB (DME required) Approach

Descent Angle:	3.00°		
Fix	IAF KNK	FAF BAPGO	MAPt KN012
Fix Coordinates	535347.4N 0085613.2W	535303.1N 0090231.0W	535418.8N 0085143.7W
Fix Formation Bearing °T	-	258.82 KNK	078.82 KNK
Fix Formation Distances	-	8.00 CON	1.50 CON

Holding Identification EIKN AD 2.24-16

<i>Holding Fix</i>	<i>Latitude (N)/ Longitude (W)</i>	<i>Inbound True Track (degrees)</i>	<i>Inbound Magnetic Track (degrees)</i>	<i>Maximum Indicated Airspeed (kts)</i>	<i>Minimum/Maximum Holding Level / Altitude (FL/ft)</i>	<i>Distance outbound (NM)</i>	<i>Direction of Turn</i>
KNK	535347.4 / 0085613.2	078.7	083	220	3000ft/FL80	4.1	R