

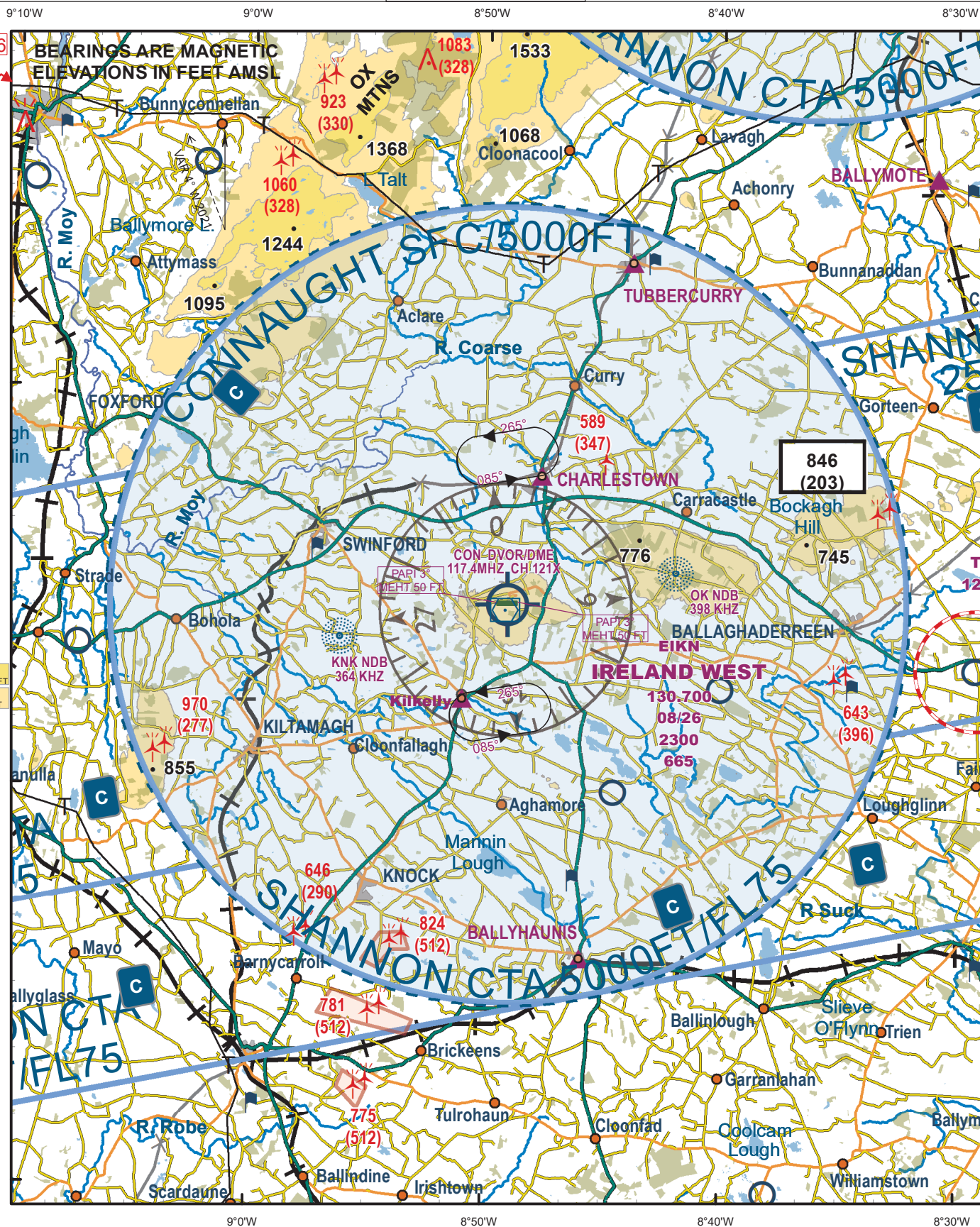
VISUAL APPROACH CHART - ICAO

AERODROME ELEV. 665 FT

TWR 130.700
GND 121.900
ATIS 118.525
EMERGENCY 121.500

CONSULT NOTAM FOR LATEST INFORMATION

IRELAND WEST / KNOCK



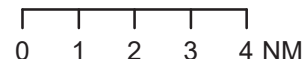
Note 1: In the event of a radio failure:

- Aircraft from the North route via Tubbercurry not above 2000 FT to the Charlestown Hold
 - Aircraft from the South route via Ballyhaunis not above 2000 FT to the Kilkelly Hold
- Hold to receive landing instructions from the Control Tower using the ALDIS lamp.

SCALE 1:250,000

Datum: Malin Head

2646 Highest obstacle off chart encompassing the CTR



Based on Ordnance Survey Ireland by permission of the Government Permit 7109



Visual Holding Pattern (Based on TAS 120 kts)