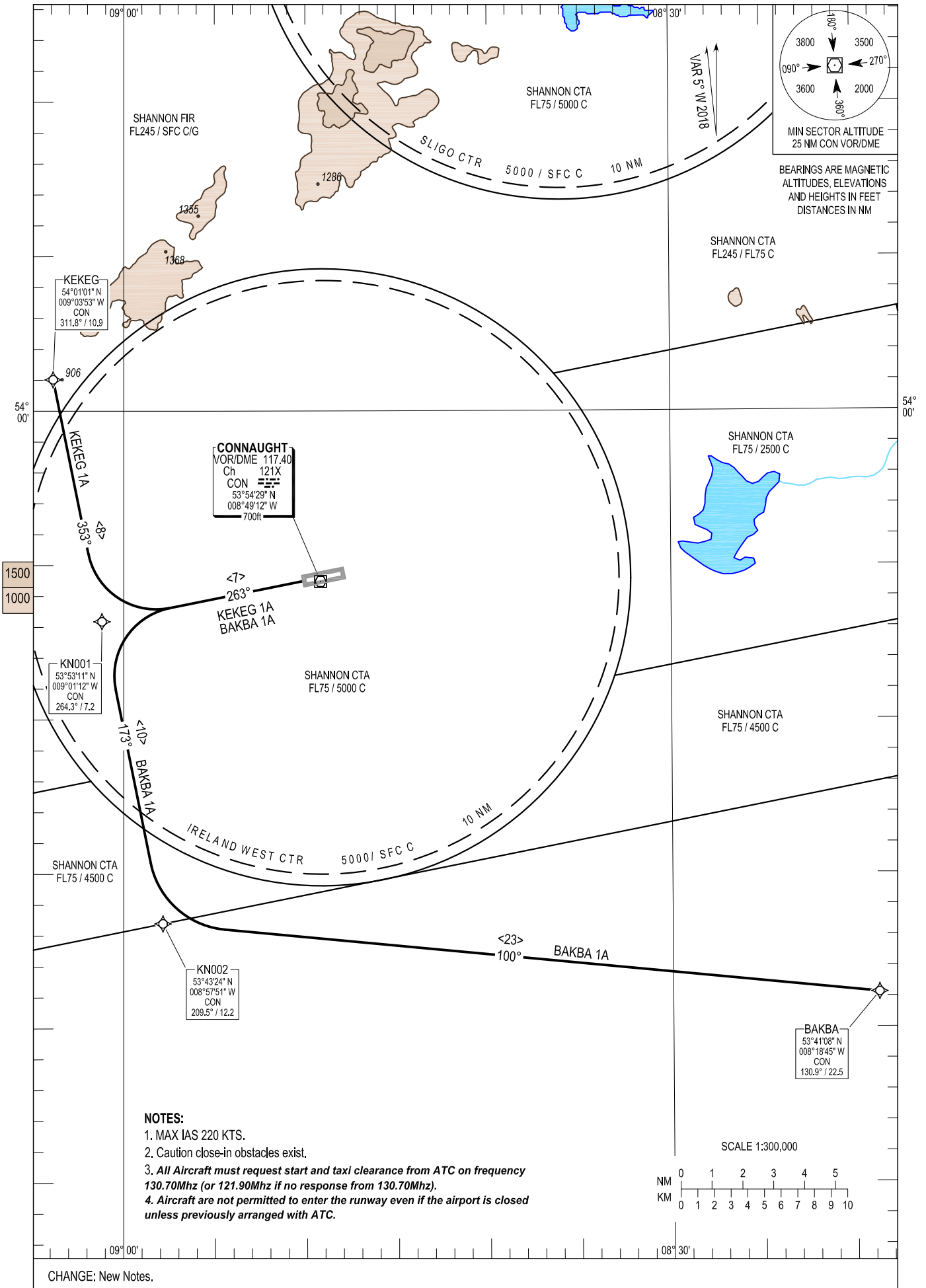


TWR 130.7
GND 130.7, 121.9
Emerg 121.5

KEKEG 1A, BAKBA 1A.



NOTES:

- 1. MAX IAS 220 KTS.
- 2. Caution close-in obstacles exist.
- 3. All Aircraft must request start and taxi clearance from ATC on frequency 130.70Mhz (or 121.90Mhz if no response from 130.70Mhz).
- 4. Aircraft are not permitted to enter the runway even if the airport is closed unless previously arranged with ATC.

CHANGE: New Notes.

KEKEG1A CAT A/B/C/D SID RWY26

KEKE1A

Navigation Performance	Path Terminator	WPT Name	Latitude (N), Longitude (W)	Fly-By or Fly-over	Distance (NM)	True Track/ Magnetic Track	Upper limit/ Lower Limit	Speed Limit (kts)	Remarks
RNAV1	CF	RWY26	-	-	-	258.7/ 263	-	220	-
RNAV1	CF	KN001	535311.1/ 0090111.5	Fly-By	-	258.7/ 263	-	220	-
RNAV1	TF	KEKEG	540101.0/ 0090352.9	Fly-By	8.0	348.6/ 353	-5000	220	R

BAKBA1A CAT A/B/C/D SID RWY26

BAKB1A

Navigation Performance	Path Terminator	WPT Name	Latitude (N), Longitude (W)	Fly-By or Fly-over	Distance (NM)	True Track/ Magnetic Track	Upper limit/ Lower Limit	Speed Limit (kts)	Remarks
RNAV1	CF	RWY26	-	-	-	258.7/ 263	-	220	-
RNAV1	CF	KN001	535311.1/ 0090111.5	Fly-By	-	258.7/ 263	-	220	-
RNAV1	TF	KN002	534324.2/ 0085751.4	Fly-By	10.0	168.6/ 173	-	220	L
RNAV1	TF	BAKBA	534108.0/ 0081845.4	Fly-By	23.3	095.3/ 100	-5000	220	L