

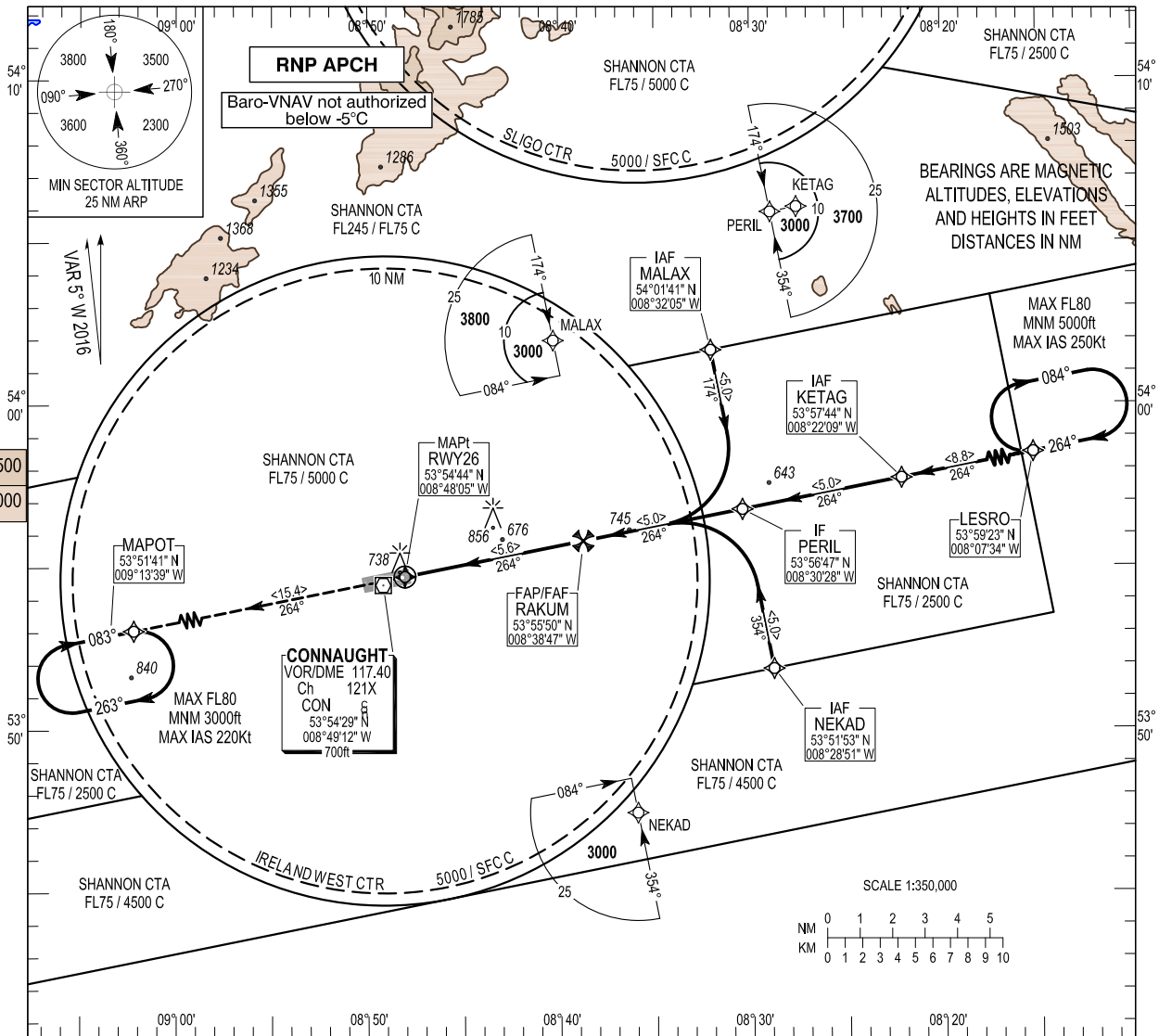
INSTRUMENT AERODROME ELEV 665 ft
APPROACH CHART- ICAO
 HEIGHTS RELATED TO THR RWY 26 - ELEV 665 ft

SBAS
 CH 73326
 E26A

TWR 130.7
 GND 130.7, 121.9
 ATIS 118.525
 Emerg 121.5

CONSULT NOTAM
 FOR LATEST
 INFORMATION

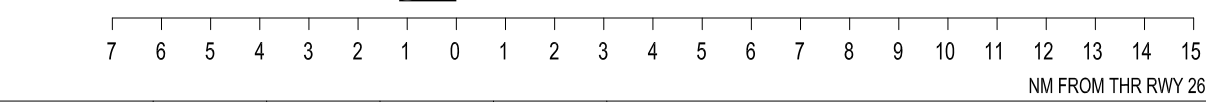
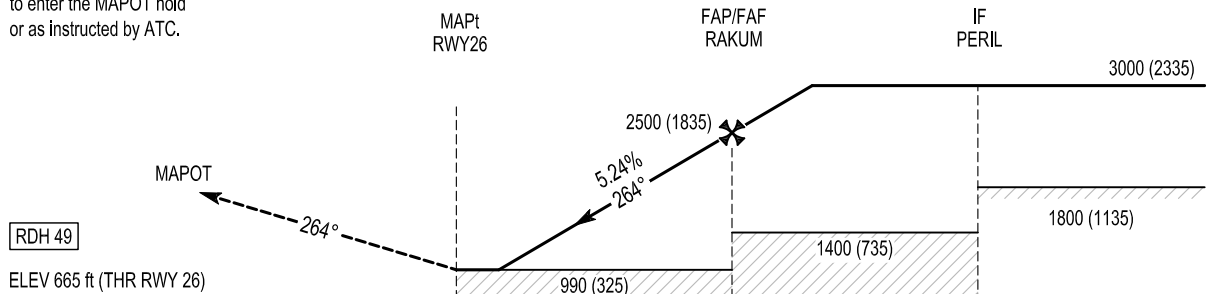
IRELAND WEST/KNOCK
RNP RWY 26
 (ACFT CAT A, B, C, D)
 MNM TEMP -5°C
 MAX +30°C



CHANGE: GENERAL REVISION, ATIS FREQUENCY, CHART TITLE, LPV AND FAS DATA BLOCK.

MISSED APPROACH:
 Climb straight ahead to 3000ft
 to enter the MAPOT hold
 or as instructed by ATC.

**TRANSITION
 ALTITUDE 5000 ft**



Aircraft Category		A	B	C	D	Recommended Profile on Final Approach											
OCA (OCH)	LPV	880 (215)	885 (220)	890 (225)	900 (235)	THR 26	5.0	4.0	3.0	2.0	1.0						
	LNAV/VNAV	920 (255)				ALT (HGT)	2305 (1640)	1990 (1325)	1670 (1005)	1350 (685)	1030 (365)						
	LNAV	990 (325)				Descent Rate 5.24%, (3°), 318 ft/NM						kts	80	100	120	140	160
VISUAL MANOEUVRING (These heights are AAL)		1060 (395)	1160 (495)	1260 (595)	1360 (695)							ft / min	430	530	640	740	850

IRELAND WEST/KNOCK RNP RWY 26

Navigation Performance	Path Terminator	WPT Name	Latitude (N)/ Longitude (W)	Fly-By or Fly-over	Distance (NM)	True Track/ Magnetic Track	Upper limit/ Lower Limit	Speed Limit (kts)	VPA / TCH	Remarks
RNP APCH	IF	MALAX	540141.2 / 0083205.4	Fly-By	-	-	-	-	-	IAF
RNP APCH	TF	PERIL	535647.1 / 0083028.1	Fly-By	5.0	169.0 / 173	-	-	-	IF
RNP APCH	TF	RAKUM	535549.5 / 0083846.5	Fly-By	5.0	259.0 / 263	-	-	-	FAF
RNP APCH	TF	RWY26	535444.3 / 0084804.8	Fly-Over	5.6	258.9 / 263	-	-	3.00 / 49	MAPt
RNP APCH	TF	MAPOT	535141.1 / 0091338.9	Fly-By	15.4	258.7 / 263	-	-	-	MAHP

Navigation Performance	Path Terminator	WPT Name	Latitude (N)/ Longitude (W)	Fly-By or Fly-over	Distance (NM)	True Track/ Magnetic Track	Upper limit/ Lower Limit	Speed Limit (kts)	VPA / TCH	Remarks
RNP APCH	IF	KETAG	535744.1 / 0082209.4	Fly-By	-	-	-	-	-	IAF
RNP APCH	TF	PERIL	535647.1 / 0083028.1	Fly-By	5.0	259.1 / 263	-	-	-	IF
RNP APCH	TF	RAKUM	535549.5 / 0083846.5	Fly-By	5.0	259.0 / 263	-	-	-	FAF
RNP APCH	TF	RWY26	535444.3 / 0084804.8	Fly-Over	5.6	258.9 / 263	-	-	3.00 / 49	MAPt
RNP APCH	TF	MAPOT	535141.1 / 0091338.9	Fly-By	15.4	258.7 / 263	-	-	-	MAHP

Navigation Performance	Path Terminator	WPT Name	Latitude (N)/ Longitude (W)	Fly-By or Fly-over	Distance (NM)	True Track/ Magnetic Track	Upper limit/ Lower Limit	Speed Limit (kts)	VPA / TCH	Remarks
RNP APCH	IF	NEKAD	535153.0 / 0082851.3	Fly-By	-	-	-	-	-	IAF
RNP APCH	TF	PERIL	535647.1 / 0083028.1	Fly-By	5.0	349.0 / 353	-	-	-	IF
RNP APCH	TF	RAKUM	535549.5 / 0083846.5	Fly-By	5.0	259.0 / 263	-	-	-	FAF
RNP APCH	TF	RWY26	535444.3 / 0084804.8	Fly-Over	5.6	258.9 / 263	-	-	3.00 / 49	MAPt
RNP APCH	TF	MAPOT	535141.1 / 0091338.9	Fly-By	15.4	258.7 / 263	-	-	-	MAHP

Hold Identification – EIKN AD 2.24-8.2

Holding Fix	Latitude (N) / Longitude (W)	Inbound True Track (degrees)	Inbound Mag Track (degrees)	Maximum Indicated Airspeed (kts)	Minimum Holding Altitude/ Level (FL/ft)	Maximum Holding Altitude/ Level (FL/ft)	Outbound time (min)	Direction of Turn
LESRO	535922.7 / 0080734.0	259.4	263	250	5000	FL080	1	R
MAPOT	535141.1 / 0091338.9	078.3	083	220	3000	FL080	1	R

**SBAS FAS Data Block Coding Data
Ireland West RNP RWY 26**

Input Data	
Operation Type	0
SBAS Provider	1
Airport Identifier	EIKN
Runway	26
Runway Direction	0
Approach Performance Designator	0
Route Indicator	
Reference Path Data Selector	0
Reference Path Identifier	E26A
LTP / FTP Latitude	535444.3335N
LTP / FTP Longitude	0084804.7845W
LTP / FTP Ellipsoidal Height (metres)	260.6
FPAP Latitude	535430.4625
Delta FPAP Latitude (seconds)	-13.8710
FPAP Longitude	0085002.6250W
Delta FPAP Longitude (seconds)	-117.8405
Threshold Crossing Height	49
TCH Units Selector (feet)	0
Glidepath Angle (degrees)	3.00
Course Width (metres)	105.00
Length Offset (metres)	48
HAL (metres)	40.0
VAL (metres)	50.0
Output Data	
Data Block	10 0E 0B 09 05 1A 00 00 01 36 32 05 DB FB 22 17 9F 0E 39 FC 2E 1E A2 93 FF 5F 67 FC EA 01 2C 01 64 06 C8 FA 6D A8 54 CB
Calculated CRC Value	6DA854CB
Required Additional Data (not CRC wrapped)	
ICAO Code	EI
LTP/FTP Orthometric Height (metres)	202.7
FPAP Orthometric Height (metres)	179.1
SBAS EGNOS Channel	73326