

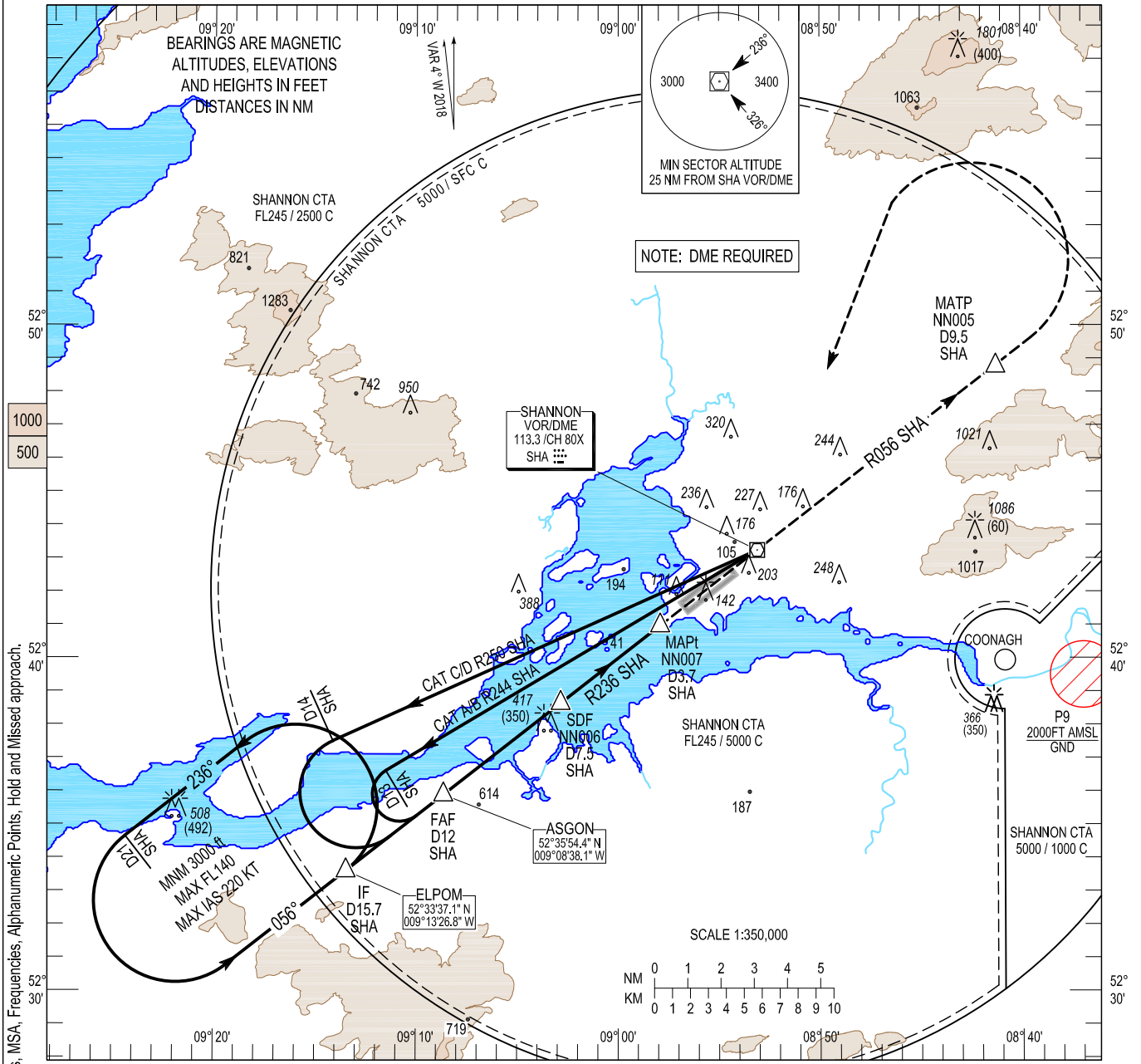
INSTRUMENT
APPROACH
CHART- ICAO

AERODROME ELEV 46 ft
HEIGHTS RELATED TO THR
RWY 06 - ELEV 46 ft

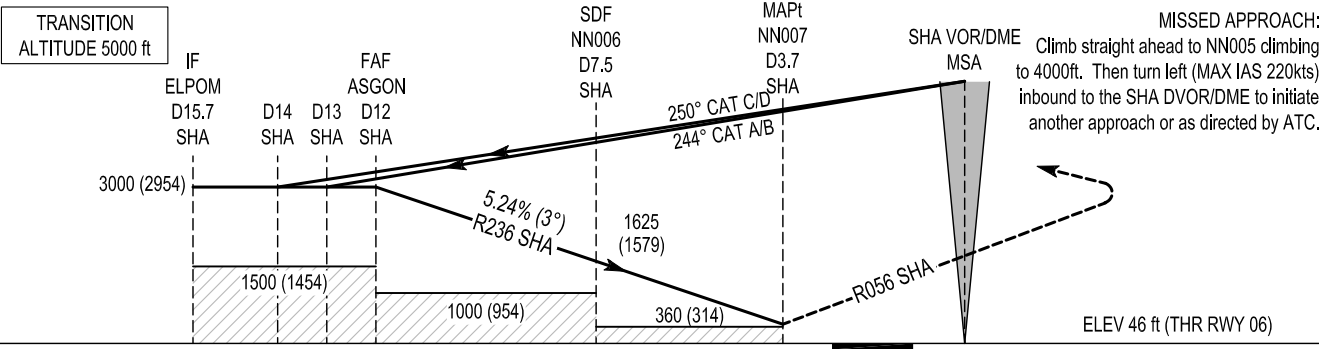
TWR 118.700
GND 121.800
APP 121.400
ATIS 130.955

CONSULT NOTAM
FOR LATEST
INFORMATION

SHANNON / SHANNON
VOR RWY 06
(ACFT CAT A, B, C, D)



Change: Chart Number, MAG VAR, bearings, MSA, Frequencies, Alphanumeric Points, Hold and Missed approach.



	15 14 13 12 11 10 9 8 7 6 5 4 3 2 1 0 1 2 3 4 5 NM FROM THR 06																
OCA (H)	A	B	C	D	Ideal Altitude/Height on Final Approach												
STRAIGHT - IN APPROACH	360 (314)				D11 SHA	D10 SHA	D9 SHA	D8 SHA	D7 SHA	D6 SHA	D5 SHA	D4 SHA					
					2740 (2694)	2420 (2374)	2100 (2054)	1785 (1739)	1465 (1419)	1145 (1099)	825 (779)	510 (464)					
VISUAL MANOEUVRING (These heights are AAL)	500 (454)	540 (494)	720 (674)	800 (754)	Descent Rate 5.24%, (3°), 318 ft/NM							Kts	80	100	120	140	160
												ft / min	425	530	640	745	850

06 DEC 2018

RWY 06 VOR Approach

Descent Angle:	5.24%						
Fix	IF ELPOM D15.7 SHA	FAF ASGON D12 SHA	SDF NN006 D7.5 SHA	MAPt NN007 D3.7 SHA	SHA	MATP NN005	IAF SHA
Fix Coordinates	523337.1N 0091326.8W	523554.4N 0090838.1W	523839.6N 0090250.6W	524059.5N 0085755.1W	524315.6N 0085306.8W	524904.1N 0084044.4W	524315.6N 0085306.8W
Fix Formation Bearing °T	232.20 SHA	232.18 SHA	232.18 SHA	232.18 SHA	-	052.18	-
Fix Formation Distances	15.71 SHA	11.98 SHA	7.50 SHA	3.70 SHA	-	9.50 SHA	-

Holding Identification - EINN AD 2.24-11

<i>Holding Fix</i>	<i>Latitude (N) / Longitude (W)</i>	<i>Inbound True Track (degrees)</i>	<i>Inbound Magnetic Track (degrees)</i>	<i>Maximum Indicated Airspeed (kts)</i>	<i>Minimum / Maximum Holding Level / Altitude (FL/ft)</i>	<i>Limiting outbound distance (NM)</i>	<i>Direction of Turn</i>
ELPOM	523337.1N / 0091326.8W	051.85	056	220	3000ft / FL140	D21 SHA	L